

The Gender Frog



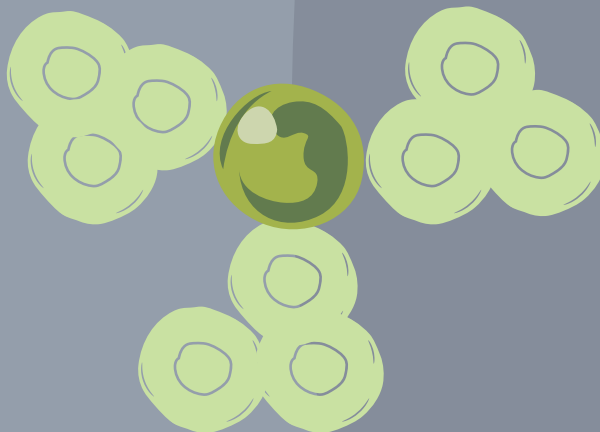
The Gender Frog is an interactive worksheet/graphic that helps portray the distinction between gender, sex assigned at birth, and sexuality. It is an Indigenized model demonstrating the complexity in the ways that we each think of ourselves and identify that was an imagined as a culturally adapted interpretation of the gender unicorn. With this worksheet, you can explore your relationship to aspects of your identity in a way that is informed by Indigenous worldview. Frogs represent sex, gender, and orientation variations for many tribal peoples. Salish frog artwork was created by Corey Begay, and this tool was developed by Itai Jeffries, PhD.

Fill in frog eggs to demonstrate your connection with words used to describe aspects of identity, and visualize the complexity that is YOU!

Note: these may change over time

Sex Assigned at Birth

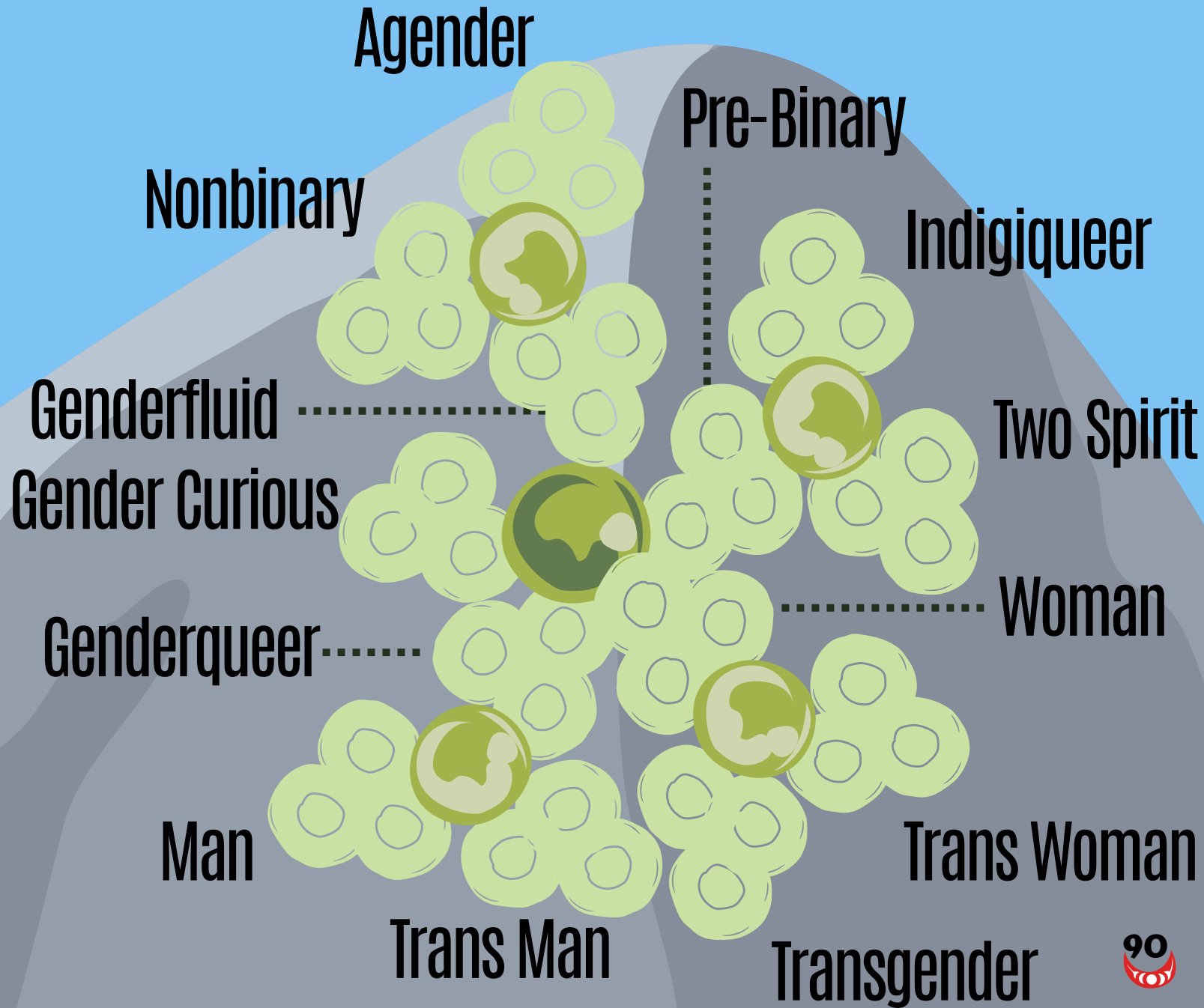
Female



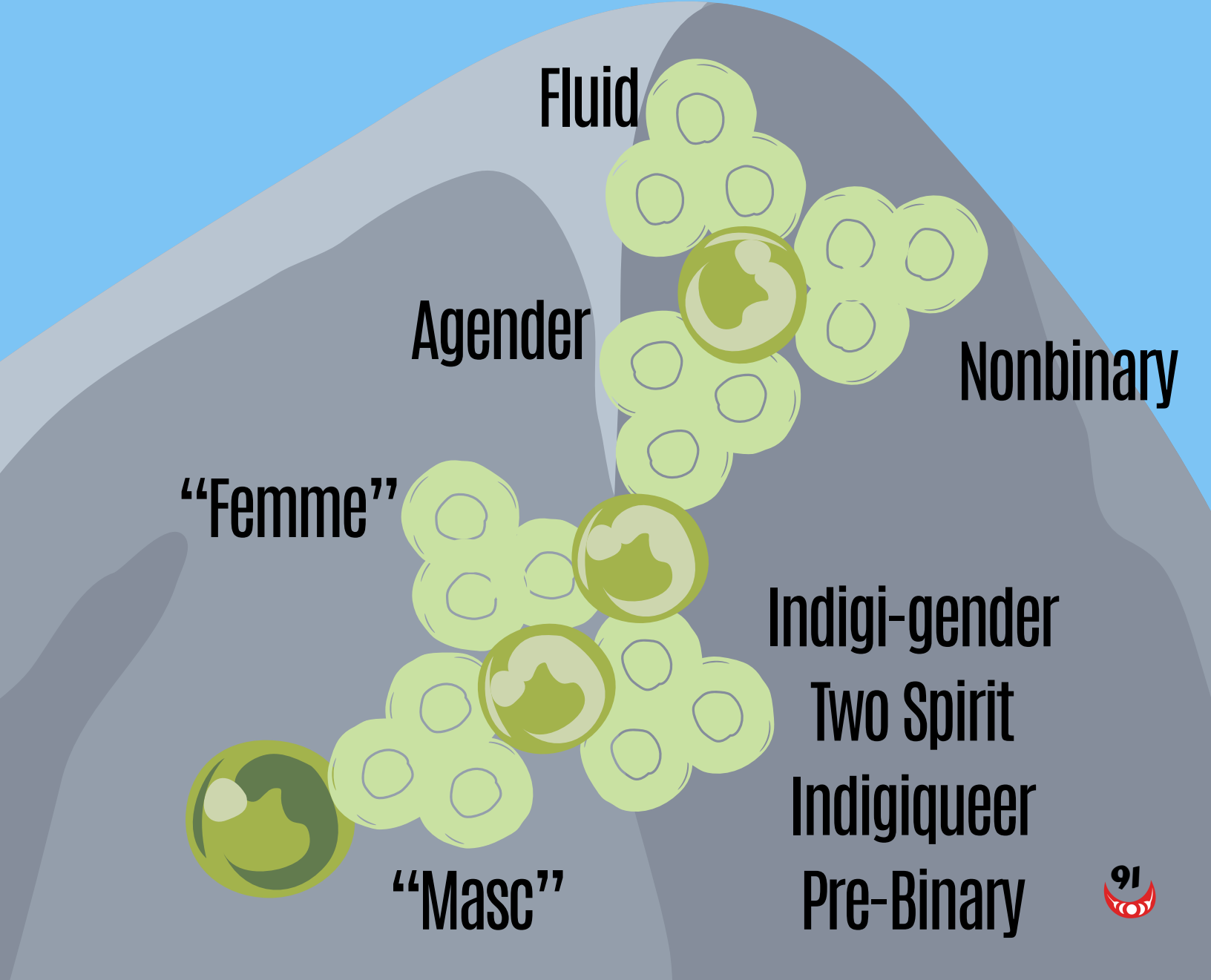
Male

Intersex

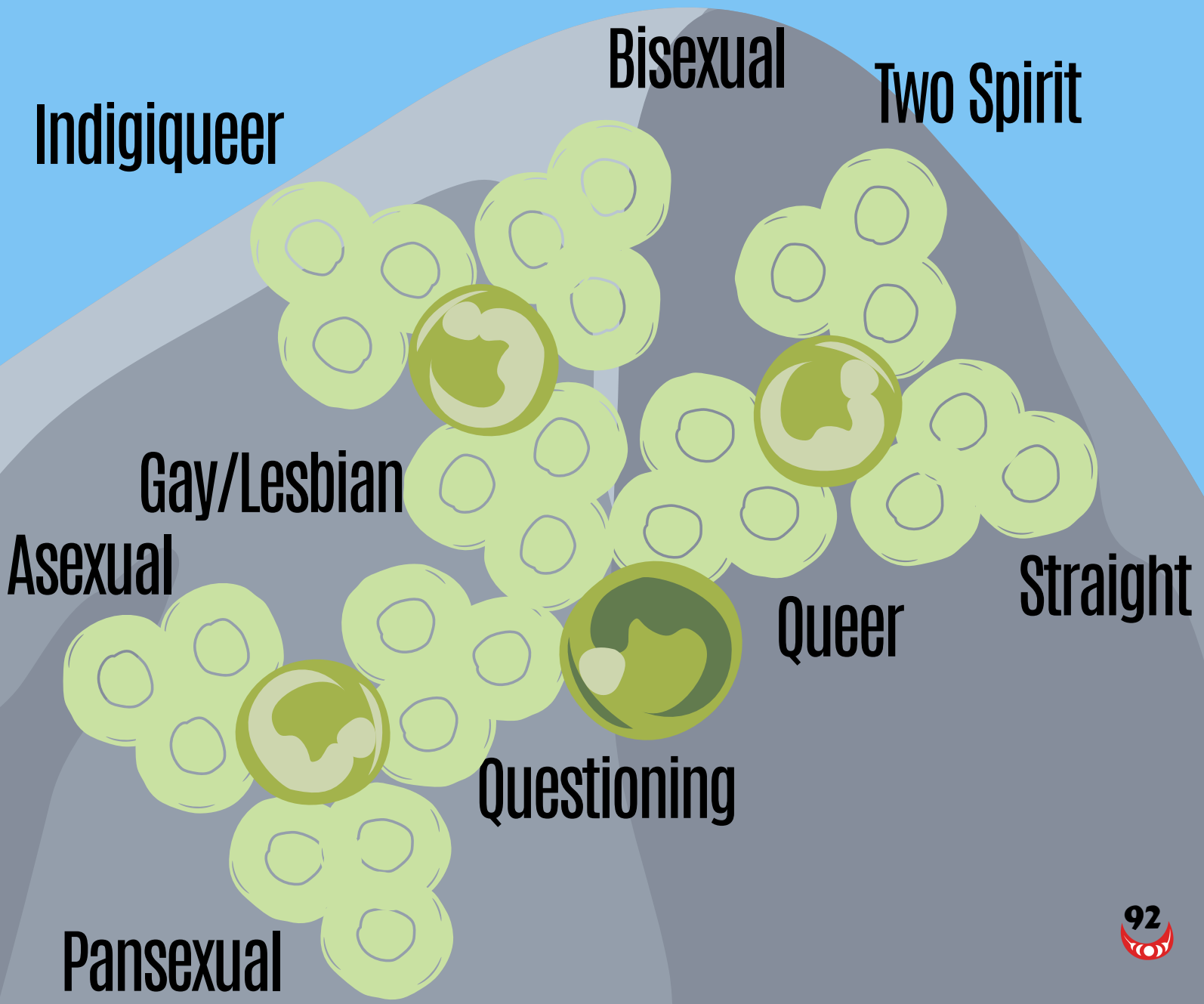
Gender Identity



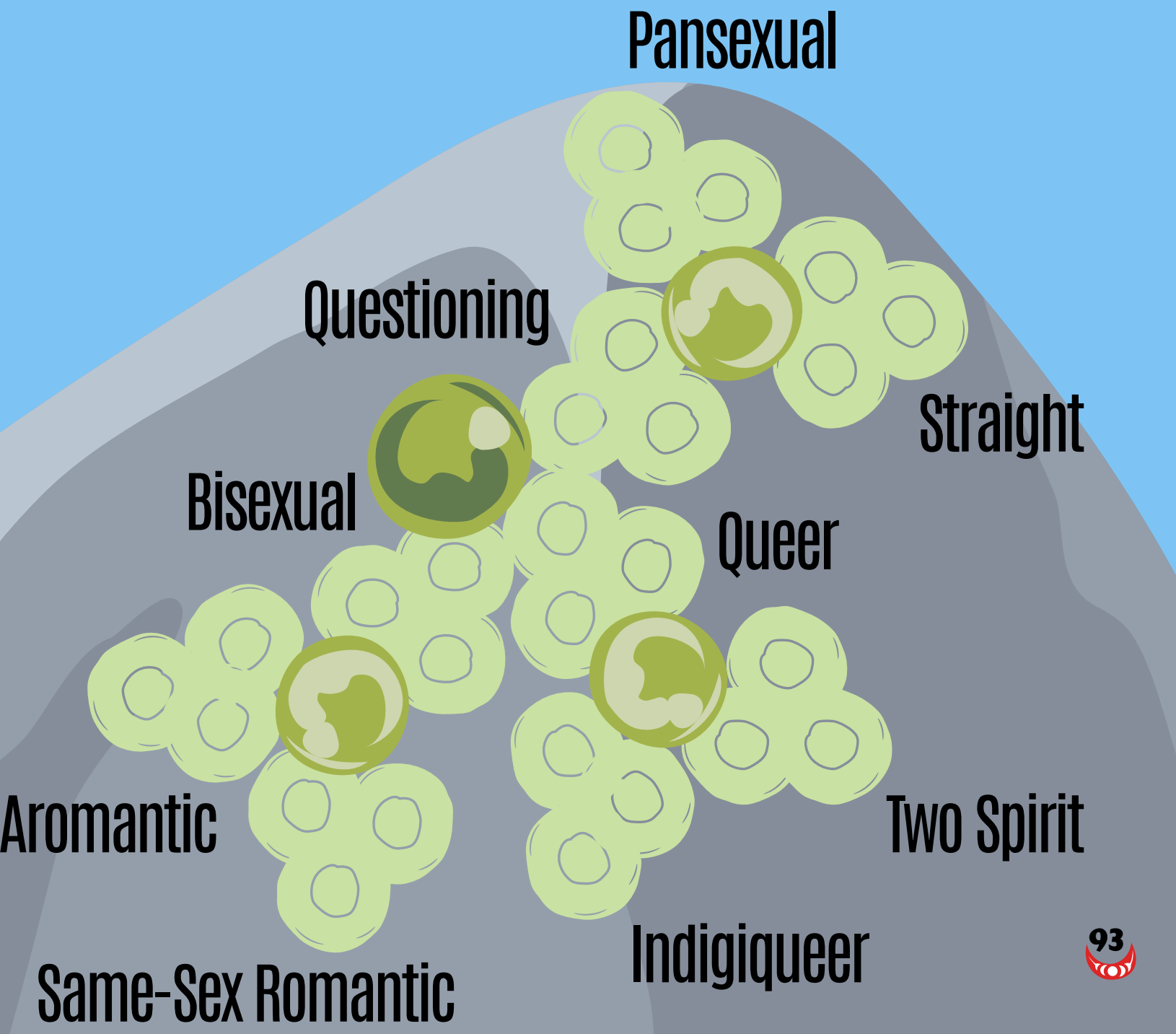
Gender Presentation/Expression



Orientation - Sexual Attraction



Orientation - Emotional & Romantic Attraction



Gender Identity

EXAMPLE

